



Bunbury Aldersey CE Primary School  
School Lane, Bunbury, Cheshire, CW6 9NR  
Tel: (01829) 260524 or 261332

RCSAT Executive Head Teacher: Mrs Nicola Badger  
School Principal: Mrs Nicola Badger  
Deputy Principal: Miss Charlotte Hickson  
[principalbunbury@RCSAT.cheshire.sch.uk](mailto:principalbunbury@RCSAT.cheshire.sch.uk)  
[admin@bunburyaldersey.cheshire.sch.uk](mailto:admin@bunburyaldersey.cheshire.sch.uk)



## DIARY DATES

- 01 Oct - Green Team Cake Sale**
- 08 Oct - Harvest Service online, 11am**
- 11 Oct - Academy Photography: Families, siblings & individuals**
- 13 Oct - Open Day for Reception 2022**
- 18 Oct - Open Day for Reception 2022**
- 20 Oct - Parents Evening Online**
- 21 Oct - Parents Evening Online**
- 01 Nov - INSET DAY**
- 17 Nov - Open Day for Reception 2022**
- 01 Dec - Sponsored Reindeer Run**
- 07 Dec - Rec & KS1 Nativity for Reception parents, 1.30pm**
- 08 Dec - Rec & KS1 Nativity for Year 1 parents, 1.30pm**
- 09 Dec - Rec & KS1 Nativity for Year 2 parents, 1.30pm**
- 10 Dec - Christmas jumper day**
- 10 Dec - Christmas lunch**
- 15 Dec - KS2 Carol concert at St. Boniface Church, 6pm**
- 17 Dec - Christmas parties**

Please view our school calendar on our website for up to date information: [www.bunburyaldersey.cheshire.sch.uk/events](http://www.bunburyaldersey.cheshire.sch.uk/events)

**Friday Celebration Assembly is now held virtually for all pupils.**

[Click here to view our](#)



*'But those who hope in the Lord will renew their strength. They will soar on wings like eagles; they will run and not grow weary, they will walk and not be faint'*  
Isaiah 40:31

Dear Parents/Carers,

Another week has passed by in school and we all continue to be enjoying our learning. This week we have been busy filming our promotional video for school. It was such a positive experience on Tuesday escorting the film company around the school and seeing all the wonderful things which take place at Bunbury. The children were wonderful and I was delighted to be told by the cameraman what a lovely school this was and that he had never seen such exemplary behaviour. I am incredibly proud of each and everyone of the Bunbury school family and the way they not only conducted themselves on Tuesday but each and everyday in school.

It was lovely to hear what the children enjoyed about Bunbury school during the pupil interviews and I even persuaded Miss Hickson to have a starring role too!

I look forward to being able to share the film with you in the near future. Next week we will be having some professional school photos taken to be used in further material for advertising the school. A huge thank you to the staff and pupils who all worked so hard to showcase the very best of Bunbury Aldersey CE Primary school.



## Harvest Service

### **Harvest Service - Friday 8th October at 11am**

This year we will be still holding our Harvest Service online. Whilst I am aware that restrictions have been lifted I will continue to exercise caution around large scale whole school indoor events for the safety of all staff, children and parents. The service will feature our usual participation from all children as well as our Harvest songs. As we will not all gather in church to say thank you to God we would like to welcome you to our service via Zoom. An invitation has been emailed to all parents/carers today along with a list of wanted items for Nantwich Foodbank.

Once again we will be donating all our Harvest gifts to this local and very worthy cause.



### Woodland Learning Area.

Our woodland learning area is now up and running and being used on a regular basis by children across the school. Mrs Moxley has been leading the sessions to date and is thankful for all donations of equipment which have been received so far. If you have any of the following to donate to our woodland learning resources we would be extremely grateful:

- Kitchen utensils: especially spoons, metal bowls, Stainless steel/metal cups, large/small pans, muffin tins etc
- Tree slabs
- Stainless steel/tin tea set
- metal kettle
- Drainpipes/ guttering pipes
- Empty picture frame (No glass inside)
- Rope
- Trowels/spades
- Cable reels
- Pieces of slate/small blackboards
- toy diggers/trucks/cars



We are all enjoying the woodland learning resource and know that this has transformed and enhanced the learning experiences for all the children at Bunbury. At present our wonderful PTA have raised £5000 towards the cost of the shelter with a further £1000 to be added after a generous donation from Rural and Country Energy. This year we will be continuing to fundraise to reach our £12,000 total.



### Car Parking on ALDERSEY WAY

As we have all returned back to school I am very mindful of the parking situation once more outside school. In particular around **ALDERSEY WAY**. I have received an email from a concerned resident outlining the dangerous and inconsiderate parking which is taking place at school pick up and drop off.

Cars are parking on either side of the entrance to the road making it very difficult to get through. There is no way emergency services would be able to get through, should there be a need. There have also been concerns about the speed which people drive up and down the small cul de sac especially after turning around after dropping off and picking up.

Please can I ask that we are considerate to our neighbours around school as well as ensuring that any parking does not endanger a child's life.

Where children need to be travelling by car please can I ask that you do:

- not block residents driveways
- not park on the pavement
- not park on corners of roads
- not park in areas where it makes it difficult for children to cross or forces them to walk on the road.
- not park opposite the school entrance or zig zag lines
- not park in the minibus zone **unless** displaying a disability badge

***Outside the world may remain strange and uncertain but behind our school walls wonderful things are continuing to take place...***

### **Covid**

As you will be aware we have had 4 cases of covid within our school to date. Covid is still circulating within our community and whilst I know we do now need to live with the virus and reduce any further disruption for our children I also wish to keep everyone as well as I possibly can. We will continue to operate with caution in school but not to the extent that it will effect the educational experience the children receive. I am as always extremely grateful for your trust, patience and belief in the school as to how we continue operate.

The new guidance states: Pupils, staff and other adults should follow public health advice on when to self-isolate and what to do. They should not come into school if they have symptoms, have had a positive test result or other reasons requiring them to stay at home due to the risk of them passing on COVID-19 (for example, they are required to quarantine).

If anyone in school develops COVID-19 symptoms, however mild, they will be sent home and they should follow public health advice.

**We continue to ask that if any child is displaying symptoms of Covid 19 that a PCR test is taken asap.**

**There are 2 main COVID-19 tests:**

- **PCR tests – mainly for people with symptoms, they're sent to a lab to be checked and you get the result within a day or two**
- **rapid lateral flow tests – only for people who do not have symptoms, they give a result in 30 minutes using a device similar to a pregnancy test**

**Whilst we understand that it is often easier to complete a LFT test if you or a member of your household is symptomatic, it is important that a more sensitive PCR test is taken, as this provides a more reliable indicator of any COVID infection.**

**The LFT test identifies infection for a short window of peak infectiousness, whereas the PCR test can identify COVID infection at a lower threshold.**

## Guidance for households with confirmed or possible Covid 19 infections

In the event of a positive case, close contacts (including household members) are no longer required to isolate if:

- they are fully vaccinated
- they are below the age of 18 years and 6 months
- they have taken part in or are currently part of an approved COVID-19 vaccine trial
- they are not able to get vaccinated for medical reasons

Close contacts will be contacted by NHS Test and Trace, informed they have been in close contact with a positive case and advised to take a PCR test. We would encourage all individuals to take a PCR test if advised to do so.

Staff who do not need to isolate, and children and young people aged under 18 years 6 months who usually attend school, and have been identified as a close contact, should continue to attend school as normal. They do not need to wear a face covering within the school, but it is expected and recommended that these are worn when travelling on public or dedicated transport. School will continue to have a role in working with health protection teams in the case of any local outbreak.

If there is a substantial increase in the number of positive cases in school or if central government offers the area an enhanced response package, a director of public health might advise us to temporarily reintroduce additional measures. These may include reverting to bubbles, the wearing of face masks or increased testing. Whilst we are very much looking forward to a more 'normal' school year, we are also mindful that Covid 19 remains a serious health issue.

We would therefore urge you to remain vigilant of the symptoms and to not send your child into school if they are displaying any such symptoms. As a school, we will always be guided by national and local guidance and will advise you of any changes that result from any advice as soon as possible.

With young children we are aware that other symptoms such as hayfever type symptoms, sickness, stomach pains, sore throat, headache can be the first indication of COVID.

As part of our Covid response we will be continuing to inform you if there has been a child within a class who is being tested for Covid 19 via text. All we ask is that you are more vigilant in watching for any symptoms in your child/children. Once we have received the results of the test we will only send out further communication should the test be positive.

## Mrs Badger's Weekly Awards

This term we will be focusing on the value of generosity. Each week we will be rewarding those children who have demonstrated this value during the school week.

### Generosity Award

**YR** - Dylan for being generous with his time, when he helped to collect the cups at washing up time

**Y1** - Ruby for spreading generosity and kindness everywhere sh goes



- Y2** - Freya for always being generous with her offers of help in the classroom  
**Y3** - Tristan for generously helping out his friends when they need support  
**Y4** - William for always being generous and offering help to teachers and friends  
**Y5** - Finley for generously offering to help others in his class  
**Y6** - Natalie for being generous to her friends

### Star of the week

- YR** - Aelwen for amazing writing. She independently wrote her own name and her sister's name  
**Y1** - Jack Morg for his fantastic explanations of new vocabulary in art and science this week  
**Y2** - Marcie for her fantastic place value problem solving in Mathematics  
**Y3** - William T for a beautifully written piece of independent writing  
**Y4** - Seb for his fantastic work in Maths  
**Y5** - Lollie for her wonderful geography work on Latin America  
**Y6** - Nathan for completing some brilliant maths work on factors this week



### PE Award

This weeks PE award goes to **Evan in Y6** for giving it everything during indoor bench ball!

### Mathletics Awards

- YR Bronze** Lucy, Rose & Elsie  
**Y1 Bronze** Edie  
**Y2 Bronze** Theo, Frankie, Charlie, Tom, Ruby, Annabelle, Daisy & Noah  
**Silver** Theo & Ruby  
**Y3 Bronze** Eliza  
**Y4 Bronze** Freddie, Alex, Emre, Isabelle & Corey  
**Y5 Bronze** Euan, Amelia, Emily H, Evelyn, Harriet & Finley  
**Silver** Emily H  
**Y6 Bronze** Carter, Ted, Natalie, Scarlett, William R, Jack & Alyssia

### Times Tables Awards

- Y2 Bronze** (X5) Ben  
**Gold** (X5) Annabelle, Chloe, Ruby, Frankie & Freya  
**Silver** (X10) Henry, Theo, Olivia, Marcie & Noah  
**Gold** (X10) Mia, Isla, Archie & Daisy

**Y4 Silver** Henry, Freddie, Ted & Sam

**Gold** George

**Champion** Corey, Alex & Zachery

**Y5 Gold** Finley & Hugo

**Y6 Bronze** Zac

**Silver** Evan, Holly & Charlie

**Gold** Reuben

Keep smiling, stay strong and keep safe Bunbury.

Have a lovely weekend and we look forward to seeing you all back in school on Monday.

*N M Badger*

## **Other News**

### **Part-Time Midday Assistant Required**

We are seeking to employ a person to work within our school as a Midday Assistant on a Wednesday and Friday each week from 11.45am-1pm. The work will range from monitoring and helping pupils with school lunches and clearing tables to being on duty outside, ensuring the safety of children during play and administering first aid if required (training for this will be given). If you are at all interested in the position and would like to know more, please contact [admin@bunburyaldersey.cheshire.sch.uk](mailto:admin@bunburyaldersey.cheshire.sch.uk) or speak with Mrs Waring in the school office by 3pm, Monday 4th October.

## **PTA News**

### **150 Club Draw**

This months 150 club was drawn by our Y6 pupils. The winning number was 120, belonging to Brenda Sutcliffe - Congratulations!! You have won £40, please contact the PTA via [pta@bunburyaldersey.cheshire.sch.uk](mailto:pta@bunburyaldersey.cheshire.sch.uk) to arrange collection of your winnings.

# No bus to take you where you want to go?

Now there is!

Introducing...

## go-too

Your new on-demand, flexible minibus service

No timetable, no routes – just a local, flexible bus service when and where you need it.

Operating in the rural area south-west of Nantwich, travel with other people going in your direction.



Book using the new 'go-too' app from 1pm on 4 October 2021.

If you don't have a smartphone book by calling 0300 123 5103.



go-too is a new service funded by the Department for Transport's Rural Mobility Fund, provided in partnership by Cheshire East Council and Transport Service Solutions.



For more information please visit [www.go-too.co.uk](http://www.go-too.co.uk)

# ROAD SAFETY

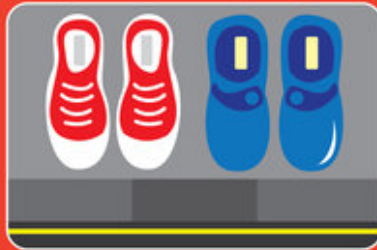
## THINK

about where you should cross.



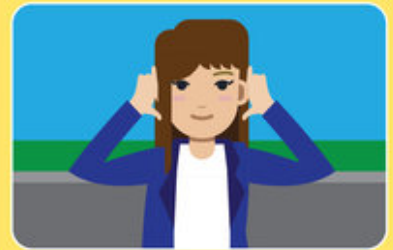
## STOP

in a safe place at the side of the road.



## USE YOUR EYES & EARS

to see and hear any approaching vehicles.



## WAIT

until all the vehicles have passed.



## LOOK AND LISTEN

again to make sure all is clear.



## CROSS

the road. Keep looking and listening.





## FAMILIES AND COMMUNITY TEAM



### PARENT WORKSHOPS

Helping children manage worries and anxiety.

Visyon's Family and Community Wellbeing Team are pleased to offer an 8-week Parent Workshop Programme which will provide information, advice and strategies to empower parents to effectively support their children, with their worries and anxieties.

The Programme is available for Families in Cheshire East and will be held at Visyon in Congleton. If you would like to book a place on the Programme, please contact [lynne.fitton@visyon.org.uk](mailto:lynne.fitton@visyon.org.uk), who will contact you with further details.

Places are limited and will be allocated on a first come basis.



#### Parent Workshops – Helping children manage anxiety.

- 22/09/2021 Parenting problems and difficult behaviors.
- 29/09/2021 Securing the parent/child bond.
- 06/10/2021 Understanding your child's anxiety.
- 13/10/2021 Using praise and rewards to build confidence.
- 20/10/2021 Setting limits on anxious children's behavior.
- 03/11/2021 Managing children's worry.
- 10/11/2021 Managing difficult behavior.
- 17/11/2021 Review and celebration.

Each session will start at 5 pm and finish at 6.15 pm.

WWW.VISION.ORG.UK  
01260 290000



FELLOWSHIP HOUSE, PARK ROAD, CONGLETON, CW12 1DP

CHARITY NO. 1107952  
COMPANY NO. 5250758