



Bunbury Aldersey CE Primary School
 School Lane, Bunbury, Cheshire, CW6 9NR
 Tel: (01829) 260524 or 261332

RCSAT Executive Head Teacher: Mrs Nicola Badger
 School Principal: Mrs Nicola Badger
 principalbunbury@RCSAT.cheshire.sch.uk
 admin@bunburyaldersey.cheshire.sch.uk



DIARY DATES

- 10 Sep - Homework sent out**
- 15 Sep - Meet the Teacher info sent out**
- 08 Oct - Harvest Service online, 11am**
- 11 Oct - Academy Photography: Families, siblings & individuals**
- 13 Oct - Open Day for Reception 2022**
- 18 Oct - Open Day for Reception 2022**
- 20 Oct - Parents Evening Online**
- 21 Oct - Parents Evening Online**
- 01 Nov - INSET DAY**
- 17 Nov - Open Day for Reception 2022**
- 01 Dec - Sponsored Reindeer Run**
- 07 Dec - Rec & KS1 Nativity for Reception parents, 1.30pm**
- 08 Dec - Rec & KS1 Nativity for Year 1 parents, 1.30pm**
- 09 Dec - Rec & KS1 Nativity for Year 2 parents, 1.30pm**
- 10 Dec - Christmas jumper day**
- 10 Dec - Christmas lunch**
- 15 Dec - KS2 Carol concert at St. Boniface Church, 6pm**
- 17 Dec - Christmas parties**

Please view our school calendar on our website for up to date information: www.bunburyaldersey.cheshire.sch.uk/events

Friday Celebration Assembly is now held virtually for all pupils.



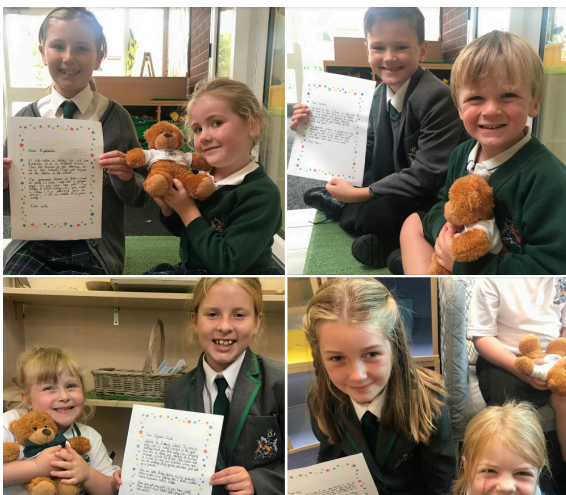
'But those who hope in the Lord will renew their strength. They will soar on wings like eagles; they will run and not grow weary, they will walk and not be faint'
 Isaiah 40:31



Dear Parents/Carers,

Firstly, I wanted to say a huge thank you for all your support this week at the start of the new academic year. It has been a genuine pleasure to welcome all the children back into school and also welcome some new families to Bunbury too. We welcome all our reception children and their families into our school community. Last week we introduced our Year 5's to their reception buddies. They were given a letter and Bunbury Teddy Bear to welcome them to the school. It was lovely to see all the reception children cuddling their bear as they school that day. We hope that all the children and

bears will have many happy years as part of the Bunbury school family.



We also welcome: Emre (Year 4) & Asher (Year 1) and Zac (Year 6) and Jacob (Year 4). We hope you have enjoyed your first few days with us at Bunbury.

The children are all happy to be back in class and there is a buzz and excitement in all the rooms. As I walk around the corridors I am lifted seeing my colleagues doing what they do best - teaching your children. We have had a fantastic few days seeing all children return and start to get into routines and re-connect with their teachers and classmates.

Their behaviour has been exemplary and everyone has very quickly adapted to the new systems and routines we have in place.

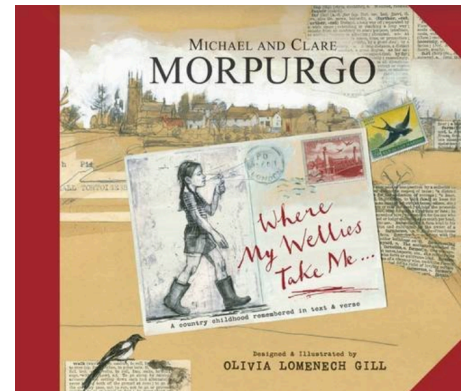
As always the Bunbury teachers are providing a rich and stimulating curriculum for the children which is

inspiring our children to engage 100% with their learning. Our theme this term is a geography based theme around the book 'Where my Wellies Take Me'. More information about our curriculum and how it has been developed can be found on our school website.

<http://bunburyaldersey.cheshire.sch.uk/page/curriculum/57302>

I look forward to being able to share more work with you over the term.

I continue to be extremely proud of all the Bunbury family this week both staff and children - they are incredible. They have all shown such resilience and determination during difficult times and a strength of character beyond their years. Their positivity and joy at being back in school has been infectious and Bunbury Aldersey Primary is once more alive and developing that 'love of learning'.



Head and Deputy Boys and Girls

This week we have appointed our Head and Deputy Boys and Girls in year 6. After writing letters of application for the role as well as being interviewed by our school council I am proud to say that the following children were selected to take on these very important roles in school.

Reuben - Head
Carter - Deputy
Keira - Head
Isabella - Deputy

Congratulations. I know you will all be fantastic role models in your new positions.

Car Parking

As we have all returned back to school I am very mindful of the parking situation once more outside school. Please can I encourage, where possible, all children to either walk or cycle to school and that this message is shared within your families for all those responsible for dropping off or collecting children from school. Where children need to be travelling by car please can I ask that you park considerately around the surrounding area for example by:

- not blocking residents driveways
- not parking on the pavement
- not parking on corners of roads
- not parking in areas where it makes it difficult for children to cross or forces them to walk on the road.
- not parking opposite the school entrance or zig zag lines
- not parking in the minibus zone **unless** displaying a disability badge

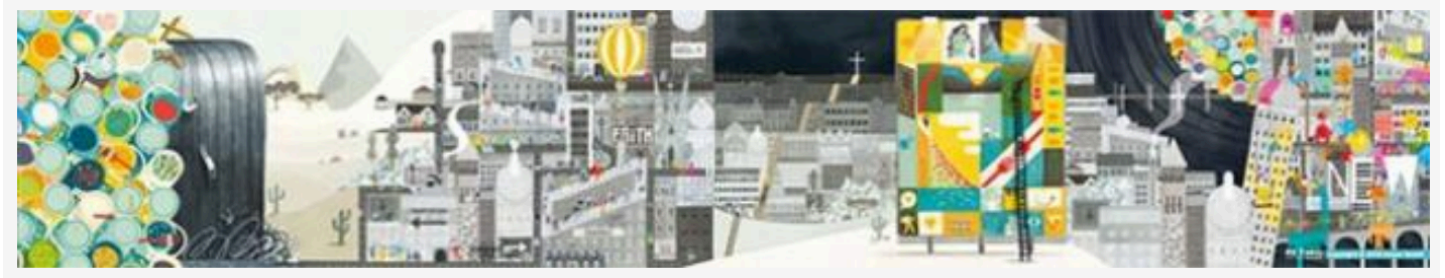
Unfortunately we have already had examples of inconsiderate parking this week and as I have done previously I will be sharing examples of this on our newsletter.

Understanding Christianity

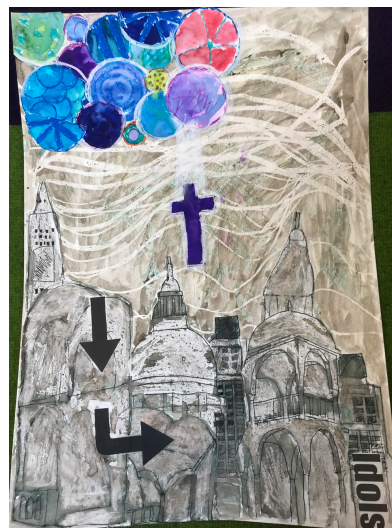
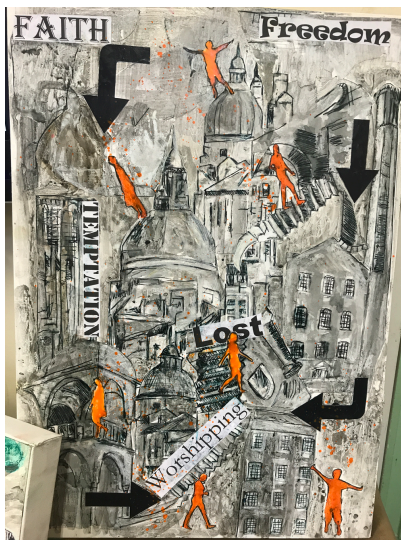
The Biggest Story is the Story of the Bible and can be told through a series of concepts below. This week we have been learning about this in RE and creating pieces of artwork which tell the WHOLE big story across the school.

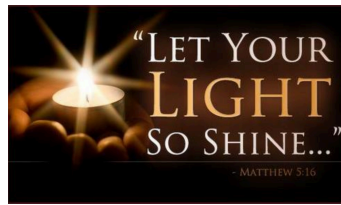


We looked at The Big Frieze, a piece of artwork featuring different panels that represent the different concepts. We then worked in our classes to produce a panel representing one of the concepts.



This will be all be displayed together to make our own The Biggest Story display in the school hall. We look forward to being able to share with you our finished interpretation of The Big Story.





Outside the world may remain strange and uncertain but behind our school walls wonderful things are continuing to take place...

Covid

With Covid still circulating within our community and a change of guidance over the summer it is important that we continue to be aware of the latest protocol.

The new guidance states: Pupils, staff and other adults should follow public health advice on when to self-isolate and what to do. They should not come into school if they have symptoms, have had a positive test result or other reasons requiring them to stay at home due to the risk of them passing on COVID-19 (for example, they are required to quarantine).

If anyone in school develops COVID-19 symptoms, however mild, they will be sent home and they should follow public health advice.

For everyone with symptoms, they should avoid using public transport and, wherever possible, be collected by a member of their family or household. The household (including any siblings) should follow the current PHE stay at home guidance for households with possible or confirmed coronavirus (COVID-19) infection.

Guidance for households with confirmed or possible Covid 19 infections

In the event of a positive case, close contacts (including household members) are no longer required to isolate if:

they are fully vaccinated

they are below the age of 18 years and 6 months

they have taken part in or are currently part of an approved COVID-19 vaccine trial

they are not able to get vaccinated for medical reasons

Close contacts will be contacted by NHS Test and Trace, informed they have been in close contact with a positive case and advised to take a PCR test. We would encourage all individuals to take a PCR test if advised to do so.

Staff who do not need to isolate, and children and young people aged under 18 years 6 months who usually attend school, and have been identified as a close contact, should continue to attend school as normal. They do not need to wear a face covering within the school, but it is expected and recommended that these are worn when travelling on public or dedicated transport. School will continue to have a role in working with health protection teams in the case of any local outbreak.

If there is a substantial increase in the number of positive cases in school or if central government offers the area an enhanced response package, a director of public health might advise us to temporarily reintroduce additional measures. These may include reverting to bubbles, the wearing of face masks or

increased testing. Whilst we are very much looking forward to a more 'normal' school year, we are also mindful that Covid 19 remains a serious health issue.

We would therefore urge you to remain vigilant of the symptoms and to not send your child into school if they are displaying any such symptoms. As a school, we will always be guided by national and local guidance and will advise you of any changes that result from any advice as soon as possible.

As part of our Covid response we will be continuing to inform you if there has been a child within a class who is being tested for **Covid 19** via text. All we ask is that you are more vigilant in watching for any symptoms in your child/children. Once we have received the results of the test we will only send out further communication should the test be positive.

Should the test return positive then school will we send one of the following letters:

Letter to parent of child/children who have tested positive

Dear XXXXX

Thank you for informing us that your child has tested positive for COVID-19 and is now isolating at home.

We realise that this is likely to be a worrying time for you and hope that they recover quickly.

The school is following national and local advice on actions to take but is no longer responsible for identifying close contacts. Test and Trace will contact you directly to discuss your child's activities before the positive test and who needs to be contacted. They will also let you know of any help and support available.

Pupils or staff whose only contact was that they shared a class with your child do not need to be listed amongst the close contacts and we are unable to share with you any contact detail of staff or pupils.

Under new guidance anyone under 18 years 6 months and most adults will not be required to isolate, even if they are identified as close contacts, but we will be encouraging more frequent home testing. However, if anyone else in your house develops any COVID-19 symptoms, they should isolate and book a PCR test.

Please pass on our best wishes to your child and let us know how they are progressing or if there is anything further we can do to support them or you.

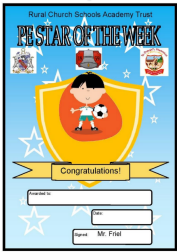
Many thanks for your continued support

Letter to school community on notification of a positive case.

Dear XXXXX

We have been informed that a member of our school has tested positive for COVID-19.

We know that you may find this concerning, but we are continuing to monitor the situation and are working closely with Public Health and the Local Authority. Under procedures for Step 4 of the Government roadmap, schools are no longer involved in the contact tracing process. Your child may be contacted by Track and Trace if they are identified as a close contact and they may be advised to book a PCR test and/or limit their social contact.



This weeks PE award goes to **Ted in Year 6** for displaying excellent tagging skills in Tag Rugby during his lesson.

Finally I just wanted to again say a huge thank you to all the support shown to both myself and the school during the past few months. This has probably been the most challenging couple of years in my career however with positivity, perseverance and the amazing team of people I work with at Bunbury we are coming through the other side.

Keep smiling, stay strong and keep safe Bunbury.

We look forward to seeing you all back in school on Monday.

Have a lovely weekend.

N M Badger

PTA News

We are excited about the new school year and hopefully getting back to social events and fundraisers.

We need more parents to join the PTA. We are very relaxed and friendly (no politics!) We are also looking for a new Chairperson. Lucy Cole is stepping down having done a fantastic job leading us over the last two years.

We are meeting next Thursday 16th evening - come along to the Yew Tree Inn from 8pm – if you are interested in joining the PTA. If you can't make it then please contact the PTA via your class WhatsApp or email pta@bunburyaldersey.Cheshire.sch.uk

Julia Arkell
PTA Treasurer



Cycling, Scooting and Roller skating

People like to Cycle, Scoot or Skate because it is a fun and healthy way to get around. It's a great way to get to school and is environmentally friendly, meaning there will be less pollution in the air near school.

Always complete a five point bike check, checking Tyres, Brakes, Chain, Lights and Reflectors before setting off.

Wherever possible use cycle routes, paths or lanes away from busy traffic.

Wear something light, brightly coloured or fluorescent in the day. At night, wear something white or reflective.

Always look all around before you set off. Give clear hand signals and look out for obstacles in the road.



Ring the bell as a warning to others to let them know you are approaching.

Concentrate - never use a mobile phone or MP3 player when cycling.

DON'T FORGET TO WEAR YOUR HELMET



Cycling and Scooter Safety & Security

Tips to help to keep you and your bike or scooter safe:

Bicycle lock - make sure you secure your bike tightly with a good security lock so that it is hard to move when it's parked.

Try to make sure you attach your bike to a solid permanent object like a lamp post or even better a bike stand.

Remember to keep a note of your bikes identification number, ask your parent or carer to help you find it on your bike.

If you can, you can get your bike chipped or get a tracker, ask your local police how to keep your bike safe.



Be Safe, Be Seen, Be Secure




ROAD SAFETY

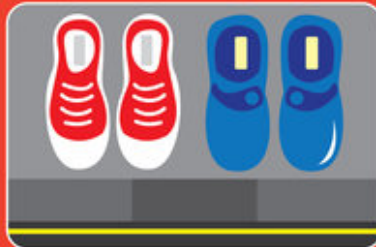
THINK

about where you should cross.



STOP

in a safe place at the side of the road.



USE YOUR EYES & EARS

to see and hear any approaching vehicles.



WAIT

until all the vehicles have passed.



LOOK AND LISTEN

again to make sure all is clear.



CROSS

the road. Keep looking and listening.



Local Asymptomatic Testing Sites NOW OPEN

9am - 6pm Monday to Friday, 9am - 4pm Saturday

Asymptomatic Tests are free lateral flow tests for people **without COVID-19 symptoms.**

REMEMBER! Almost 1 in 3 people who have COVID-19 have no symptoms but **can still spread the virus:**

- Protect your loved ones and colleagues
- Support the NHS by reducing hospital admissions
- Test results received within the hour

The pop-up testing sites are open on the following days:

Monday	Crewe Alexandra FC Stadium Alexandra Suite, Gresty Road, Crewe CW2 6EB	Prestbury Village Hall Macclesfield Road, Prestbury SK10 4BW
Tuesday	New Life Church Danesford Community Centre, West Road, Congleton CW1 4EU	Wesley Centre Wesley Avenue, Sandbach CW11 1DG
Wednesday	Crewe Alexandra FC Stadium Alexandra Suite, Gresty Road, Crewe CW2 6EB	Audlem Town Hall 12 Cheshire Street, Audlem, CW3 0AH
Thursday	New Life Church Danesford Community Centre, West Road, Congleton CW1 4EU	Wesley Centre Wesley Avenue, Sandbach CW11 1DG
Friday	Crewe Alexandra FC Stadium Alexandra Suite, Gresty Road, Crewe CW2 6EB	Middlewich Community Church Brooks Lane, Middlewich CW10 0JG
Saturday	New Life Church Danesford Community Centre, West Road, Congleton CW1 4EU	Wesley Centre Wesley Avenue, Sandbach CW11 1DG

*Test Centres will be closed on **Sundays and Bank Holidays**

SCAN HERE



Three ways to book your Asymptomatic Test

- 📱 Scan the QR Code to the left with your mobile
- 🌐 Visit cheshireeast.zipporah.co.uk/LFT.Bookings
- ☎ Call 0300 123 5032

Working for a **brighter future** together

